



**Newsletter Friday 26th January 2024**

## Friday 2nd February 2024



**Make maths fun and dress up for digits!**

**Wear an item of clothing with a number on.**

**To help raise money for the NSPCC we are asking for a suggested donation of £1!**



**Christ Church Primary SW9**

*A school for everyone*

A MEMBER OF THE  SW9 PARTNERSHIP



**Next Friday is Number Day. We look forward to seeing you in your number gear or any kind of number related costume! Please bring a pound for the NSPCC.**



**Follow us on X, Facebook & Instagram:**

**@Christchurchsw9 @SW9Partnership**

**[www.facebook.com/Christchurchsw9](https://www.facebook.com/Christchurchsw9)**

**[www.instagram.com/christchurchsw9](https://www.instagram.com/christchurchsw9)**

# We Need Your Help



**Next Friday**

**Please come along...**

**Let's make 2024 a fantastic year for school events. Please come along to the PTA AGM on Friday 2nd February.**

## **Parent Teacher Association, Annual General Meeting**

You are invited to the PTA AGM on **Friday 2 February at 9.05** in the school hall.

We will be voting a new committee (chair, vice-chair, treasurer and secretary) as well as nominating new class reps.

We need lots of new volunteers to help us make 2024 a successful year.

Come along to find out more including activities planned, funds raised, and fundraising goals.

If you're interested in nominating yourself for a position, please email [admin@christchurchschool.cc](mailto:admin@christchurchschool.cc)

Deadline for nominations Wednesday 31 January



**Christ Church Primary SW9**

*A school for everyone*

A MEMBER OF THE SW9 PARTNERSHIP

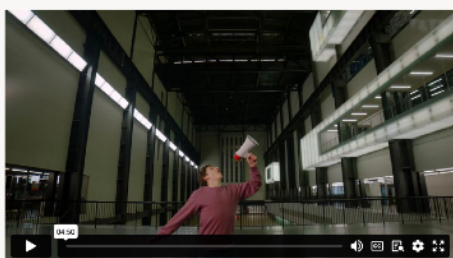


## **FREE EVENTS THIS WEEKEND**

Check here to see what activities are on offer for NO COST or low cost this weekend. Don't forget to check the organisation's website before you set off.

### **WHAT IS SOUND ART?**

Art can be very quiet... or very LOUD! Watch our video about sound art and learn about sound artists Luigi Russolo, Nam June Paik, Cildo Beireles and John Cage.



## **This week's ATTENDANCE**

**Cedar Class (YR) = 91%**

**Oak Class (Y1) = 95%**

**Maple Class (Y2) = 95%**

**Acacia Class (Y3) = 90%**

**Mulberry Class (Y4) = 90%**


**Willow Class (Y5) = 95%**

**Elm Class (Y6) = 96%**

Please remember that, regular school attendance is an important part of **giving children the best possible start in life.** The aim should be to attend 100% of the time. Children who miss school frequently will fall behind with their work and will have less chance at success in later years.



**COMING SOON...**



Christ Church Primary SW9  
A school for everyone  
A MEMBER OF THE SW9 PARTNERSHIP

**Y5 Class Assembly**  
Friday 9th February 2024  
9.10am  
All families welcome to attend

**CHECK OUT OUR SCHOOL WEBSITE FOR MORE SCHOOL EVENTS**



Christ Church Primary SW9  
A school for everyone  
A MEMBER OF THE SW9 PARTNERSHIP

**Easter Service**  
Friday 22nd March 2024 at 9.30am  
Christ Church, Brixton Road

**ALL TERM AND HOLIDAY DATES CAN BE FOUND HERE ON OUR WEBSITE including 2024/2025 TERM DATES**



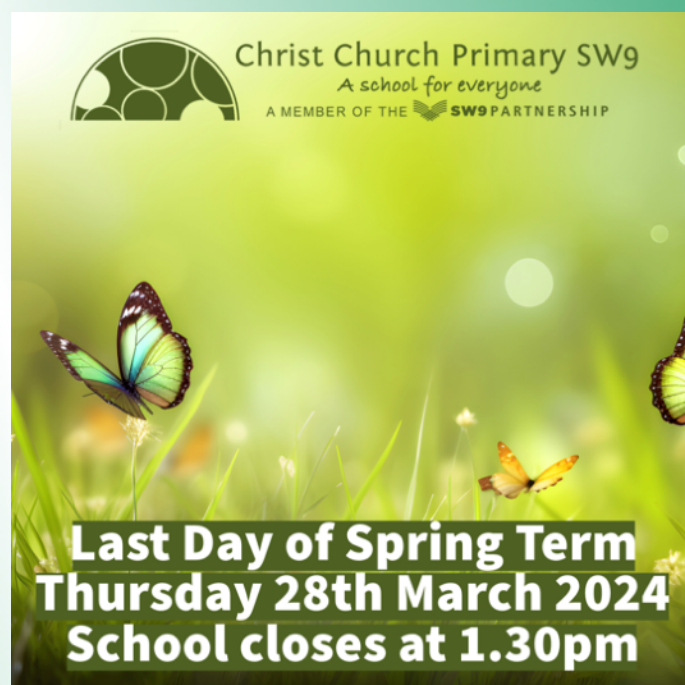
Christ Church Primary SW9  
A school for everyone  
A MEMBER OF THE SW9 PARTNERSHIP

**PARENT TEACHER MEETINGS**  
Wednesday 20th March 2024  
Thursday 21st March 2024



Christ Church Primary SW9  
A school for everyone  
A MEMBER OF THE SW9 PARTNERSHIP

**Y1 Class Assembly**  
Friday 8th March 2024  
9.10am  
All families welcome to attend



Christ Church Primary SW9  
A school for everyone  
A MEMBER OF THE SW9 PARTNERSHIP


**Last Day of Spring Term**  
Thursday 28th March 2024  
School closes at 1.30pm




**Don't forget to check out the Christ Church Champions website to see what our classes are up to!**

CC Champions


Maple | Acacia | Mulberry | Willow | Elm | Cedar | Sycamore | Oak




Maple  
Drawing Natural Objects  
January 18, 2024  
[Read More](#)




Christ Church  
The Big Sing  
January 18, 2024  
[Read More](#)




Cedar  
Creation  
January 18, 2024  
[Read More](#)



Cedar  
Our Journey to Space  
January 12, 2024  
[Read More](#)



Maple  
Moving Pictures  
January 12, 2024  
[Read More](#)



Oak  
Numbers  
January 8, 2024  
[Read More](#)

**From our local community...**

**Tel: 02081501893**  
**Mob: 07770072333**

**AGE: 5 YEARS AND OVER.**

***FAMILY BOXING & FITNESS AT BLACK PRINCE TRUST***

**FREE OF CHARGE!!!**

**EVERY WEDNESDAY AT 4pm-5pm**

Our expert instructors make learning boxing easy and enjoyable for the whole family. Join us for a fun-filled fitness journey!

**SCAN & WHATSAPP ME FOR MORE INFO:**

Physical Excellence  
WhatsApp Business Account



**BLACK PRINCE TRUST**

**PE PHYSICAL EXCELLENCE**

**METROPOLITAN POLICE**



## PERSEVERANCE

Let's not grow tired of doing good, for in time we will be rewarded, if we do not give up.

Galatians 6:9



**VOLUNTEER**

**COME AND VOLUNTEER WITH US!!**

We are living in a time where we need to help each other and come together as a community reaching out wherever possible.

Get Rid of and Donate are looking for Community Volunteers to help with distribution of donations, service operators and community care at one of our community hubs in Lambeth and Southwark.

Visit our website [www.getridofit-donate.com](http://www.getridofit-donate.com) or make arrangements to come to one of our community centres to see the work we are achieving.

If you are aged 16+ and can give a few hours a week to someone you can talk to, encourage with hope, we would like you to come along and support Get Rid of and Donate!

**GET RID OF AND DONATE**

for further information & enquiries contact us - text 'Volunteer' or message via WhatsApp to 07944 102 112.

**Contact us:**

**0207 735 1343 or [admin@christchurchschool.cc](mailto:admin@christchurchschool.cc)**

**Don't forget to check out the website: [www.christchurchschool.cc](http://www.christchurchschool.cc)**

**Check out our class blog site: [www.cc-champions.com](http://www.cc-champions.com)**





# NEWS FROM OUR CHURCH

Christ Church Parish | Parroquia Cristo Salvador  
christchurchbr.org.uk | admin@christchurchbr.org.uk | 07835 710 486

