



**Newsletter Friday 15th May 2026**



Christ Church Primary SW9

*A school for everyone*

A MEMBER OF THE  SW9 PARTNERSHIP

## Y5 Class Assembly

Friday 22nd May 2026

9.10am

All families  
welcome  
to attend

**We look forward to seeing you all next  
Friday for the Y5 class assembly.**



Follow us on Facebook & Instagram:  
[www.facebook.com/Christchurchsw9](https://www.facebook.com/Christchurchsw9)  
[www.instagram.com/christchurchsw9](https://www.instagram.com/christchurchsw9)

### ATTENDANCE THIS WEEK

- Willow Class (YR) = 87%
- Elm Class (Y1) = 91%
- Cedar Class (Y2) = 96%
- Oak Class (Y3) = 91%
- Maple Class (Y4) = 94%
- Acacia Class (Y5) = 96%
- Mulberry Class (Y6) = 99%



When there is love there is life - Mahatma Gandhi

### Our value this term is LOVE

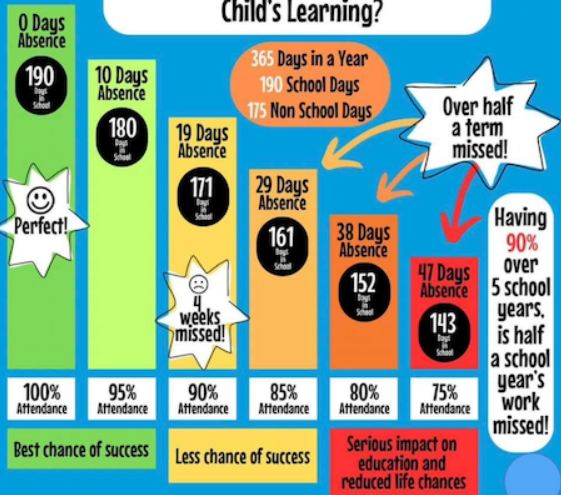
Mahatma Gandhi's life was a testament to the belief that love and non-violence are the most powerful forces for change in the world. His legacy serves as a timeless reminder that when we lead with our hearts, we create a more peaceful and united community for everyone.

### Christ Church Primary SW9

A MEMBER OF THE SW9 PARTNERSHIP



### How Does School Attendance Affect a Child's Learning?



### Christ Church Primary SW9

A MEMBER OF THE SW9 PARTNERSHIP



**Last Day of Summer Term**  
**Wednesday 22nd July 2026**  
**School closes at 1.30pm**

**ALL TERM AND HOLIDAY DATES CAN  
BE FOUND HERE ON OUR WEBSITE**



Christ Church Primary SW9  
A school for everyone  
A MEMBER OF THE SW9 PARTNERSHIP

**Summer Half Term**  
Monday 25th May - Friday 29th May 2026

### Contact us:

0207 735 1343 or [admin@christchurchschool.cc](mailto:admin@christchurchschool.cc)

Don't forget to check out the website: [www.christchurchschool.cc](http://www.christchurchschool.cc)

**SAVE THE DATE**

**SUMMER FAIR  
SATURDAY 27TH  
JUNE 2026  
1PM - 4PM**



**Christ Church Primary SW9**  
*A school for everyone*

A MEMBER OF THE  **SW9 PARTNERSHIP**

**OTHER SCHOOL EVENTS CAN BE FOUND HERE ON OUR WEBSITE**



**Christ Church Primary SW9**  
*A school for everyone*

A MEMBER OF THE  **SW9 PARTNERSHIP**

**Y2 Class  
Assembly**

**Friday 26th June 2026**

**9.10am**

**All families  
welcome  
to attend**



**Christ Church Primary SW9**  
*A school for everyone*

A MEMBER OF THE  **SW9 PARTNERSHIP**

**Reception Class  
Assembly**

**Friday 3rd July 2026**

**9.10am**

**All families  
welcome  
to attend**

**BRING THE KIDS**

**CARGO  
COLLECTIVE**



# **CAKES & CARGO BIKES IN SLADE GARDENS**

Friday 22nd May - 3-5.30pm  
Stockwell Park Road SW9 0DB

## **TRY A CARGO BIKE & EAT SOME FREE CAKE!**

Meet local parents for a chat about cargo bikes and how they can revolutionise your journey to school!

  
Lambeth



Brought to you by:

**SOLVE**  
THE SCHOOL RUN

[www.joinourcargocollective.org](http://www.joinourcargocollective.org)



BECKENHAM THEATRE TRUST  
Supporting performing, creative & community  
arts projects in the South East of England

*DET*

**FREE**

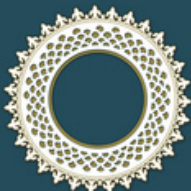
# Musical Theatre Workshops

**FREE HALF TERM WORKSHOPS  
AT LONGFIELD HALL**

**Wednesday 27th May  
(6-9s) 10am – 2:30pm**

**Thursday 28<sup>th</sup> May  
(10+) 10am – 3:30pm**

**To find out more  
call 07988629697 or email  
[youthmanager@longfieldhall.org.uk](mailto:youthmanager@longfieldhall.org.uk)**



**LONGFIELD HALL**  
WHERE CREATIVITY AND COMMUNITY MEET

Registered charity no. 1133679  
50 Knatchbull Road, London SE5 9QY  
[www.longfieldhall.org.uk](http://www.longfieldhall.org.uk)

**THE  
MACKINTOSH  
FOUNDATION**

